

Additel/LogII Data Logging Software

User Manual

Additel Corporation

2013-3

Contents

Chapter One: Overview.....	3
1. Introduction.....	3
2. System Requirements.....	3
3. Software Installation	3
4. Software activation	4
Chapter Two: Functions.....	5
1. Automatic Scanning.....	7
2. Action Scope of Buttons	7
3. Settings	8
4. Logging.....	12
5. Clear.....	12
6. Unit	12
7. View	14
8. Data Manager	14
9. Check Update	15

Chapter One: Overview

1. Introduction

Additel/LogII is specially designed to collect real-time data of pressure units under test (UUT). It is a necessary software in pressure data logging.

The features of Additel/LogII:

- It can automatically scan pressure gauges connected to the computer.
- Graphical interface can display the real-time pressure value and draw the curve for UUTS.
- Supports multiple instruments under test at the same time.
- To store pressure value according to the defined time.
- Supports data exporting in 3 formats.
- Multilingual user interface.

2. System Requirements

Hardware Requirements

CPU: Intel Pentium III (At least)

Memory: 1GB (At least)

Hard Disk free space: 2GB (At least)

Hardware must has serial port

Software Requirements

Operating System:

Windows XP/Windows 2003/Windows Vista/Windows7/Windows8

3. Software Installation

First, Open the file Setup.exe to start the installation.

Second, Install driver will detect whether the following components are installed in system or not. If not, they will be installed automatically; otherwise it will be skipped.

- Windows Installer 3.1
- Windows Imaging Component
- Microsoft .NET Framework 4

Third, The Wizard interface will appear as shown in below picture. Users can finish the installation by following this Wizard.

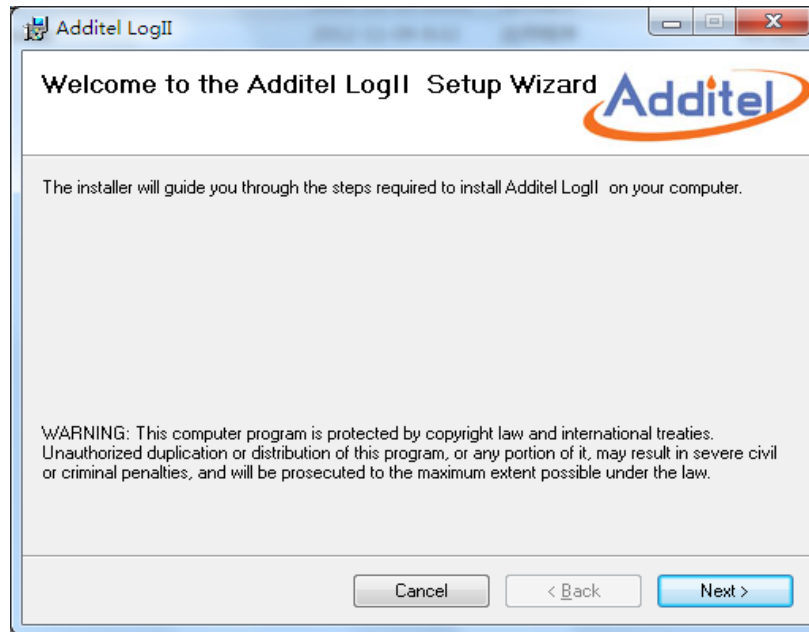


Figure 1-1

When the installation is finished, the following icon will be shown on the desktop. As below picture 1-2.



Figure 1-2

4. Software activation

Click to enter the additellogii software, and the software activation page will pop up automatically

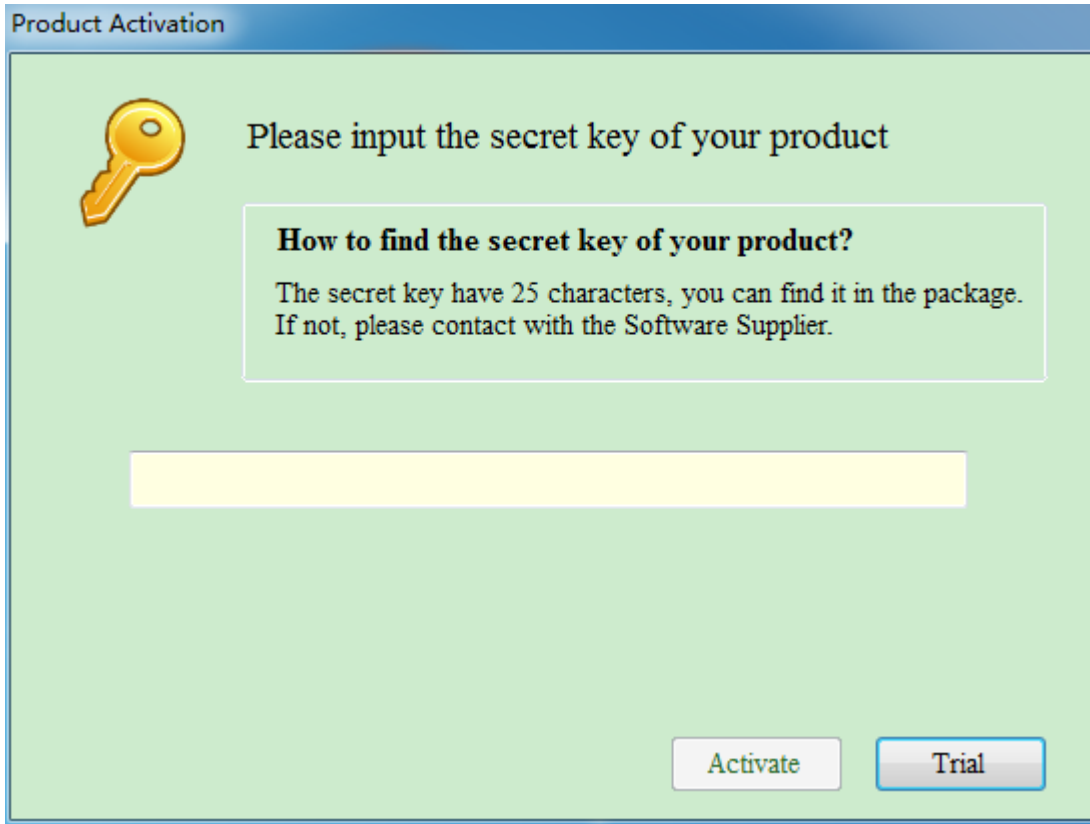


图 1-3

Please find the registration key from the software box, enter it and click the [activate] button to activate the software, or directly click the trial. The software has a free trial period of 30 days.

Chapter Two: Functions

Start the software by double-clicking above icon, the main interface will be shown as below.

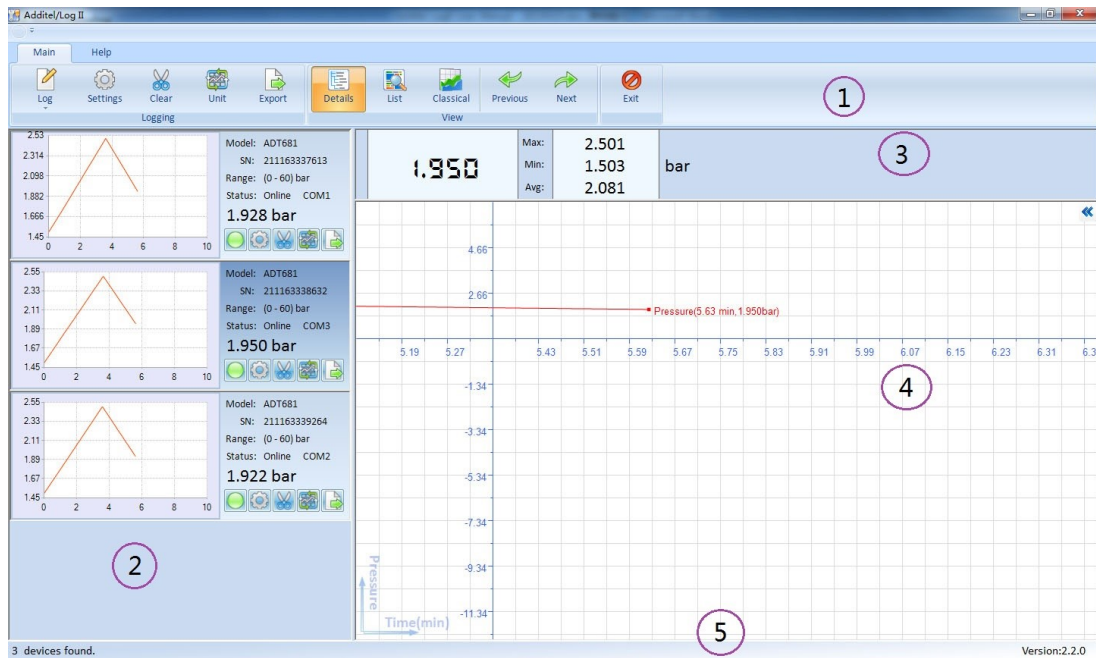


Figure 2-1

The main interface consists of 5 parts:

No.	Name	Description
1	Toolbar	It includes all the functions.
2	UUTs' list	The list will display all the connected UUTs. It shows the UUTs' information, real-time pressure value, real-time curve and main function buttons.
3	Real-time pressure display area	This area will display the real-time pressure, max pressure, min pressure and average value of selected UUT.
4	Pressure value curve display area	This area shows the whole curve of selected UUT.
5	Status bar	This area shows information like prompt message and software version.

1. Automatic Scanning

Once it starts, the software will automatically scan the connected UUTS without manual operation. And the relevant UUT information frame will be displayed in the UUTs' list area (#2).

The real-time pressure value and curve of selected UUT will be displayed separately in area #3 and #4 too.

If the software cannot detect the connected UUT, please check the following items.

- Please check whether the serial drive or USB to RS232 drive are installed correctly.
- Please make sure the cable is connected tightly with interface.
- If users use USB to RS232 cable to connect with PC, please re-plug the USB port into PC to make sure the cable could work properly.
- Please check whether the UUT is turned on.
- Please check whether the Baud rate of UUT matches the software.
- Please make sure there is no other software of PC occupied the serial port used by UUT.

2. Action Scope of Buttons

The functions of "Log", "Setting", "Clear", "Unit" and "Export" are same with the five buttons on the each frame of UUTs. And they are one to one correlate. As shown in picture 2-2.

The difference is the buttons on the toolbar could control all the connected UUTs, however the buttons on each frame could only control the relevant one.

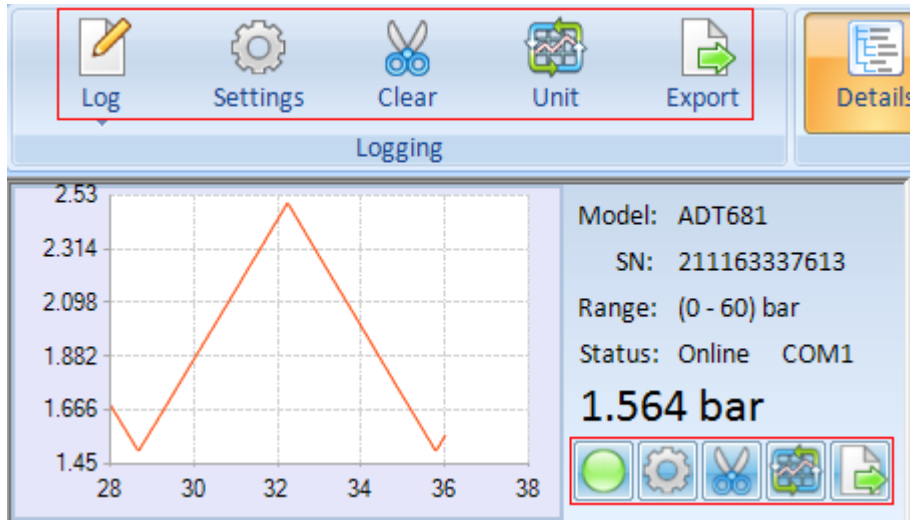



Figure 2-2

3. Settings



Click the button  on toolbar, the Settings interface appears as below.

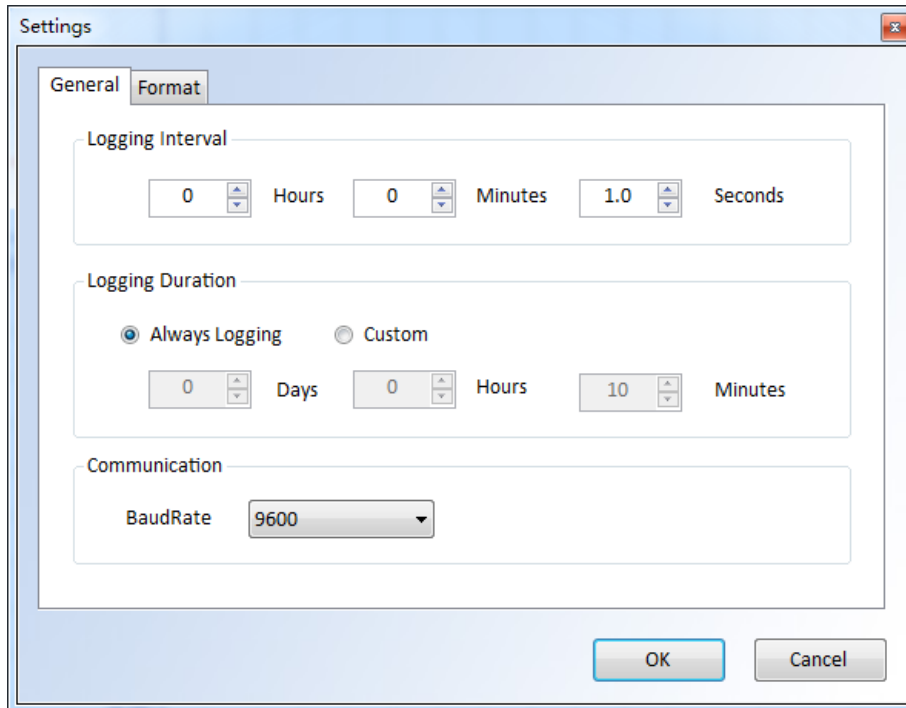


Figure 2-3

General

- Logging Interval
It means the interval time between 2 stored data.
- Logging Duration
Means the total time of the whole logging process will last. The default value will never stop the logging process, users can decide when to stop it according to requirements. Please set time before logging.
- Communication
The default value of baud rate of serial port is 9600. No need to change it in general.

Format

- Chart Style
To set the display mode of the Chart.
- Date Format
To set the display mode of the Date.
- Record Name
To set whether you want set the name of the data or not.

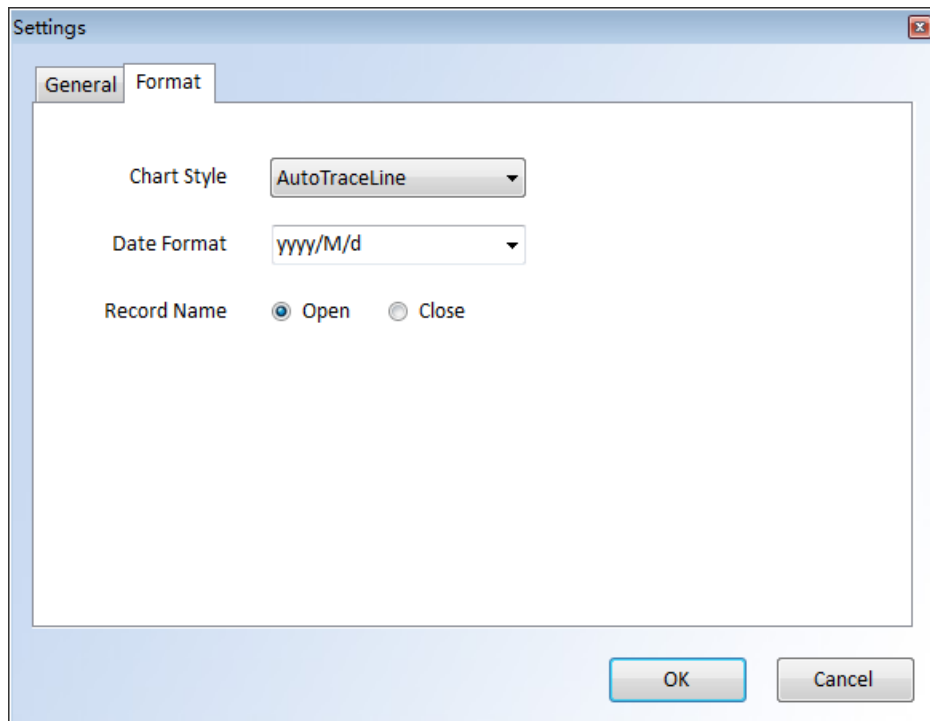


Figure 2-4

If you choose Open, when you click the  button on each frame of UUTs, you can

get the below window.

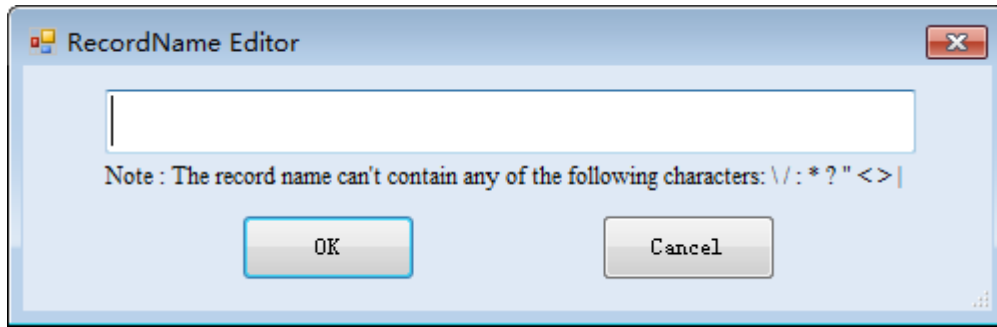



Figure 2-5



Click the button  on UUT frame to enter the below window. There is another two tabs (Gauge Profile & Data Logging) in the Settings.

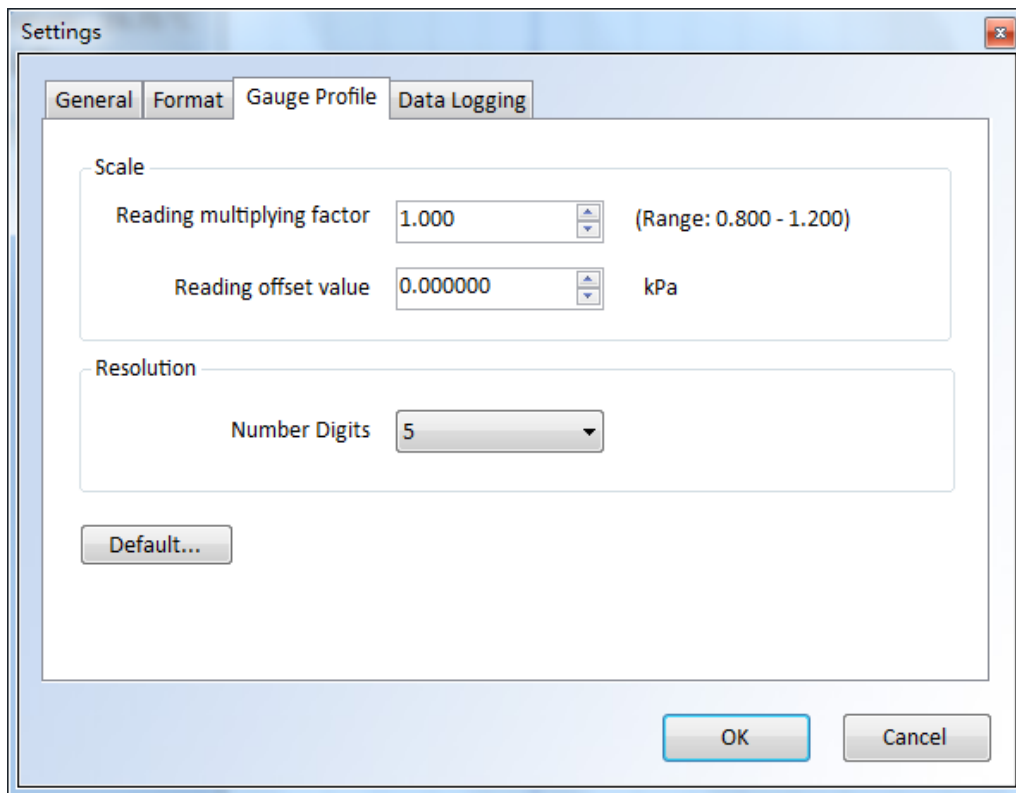


Figure 2-6

Gauge Profile

- Scale
Reading multiplying factor (range: 0.900 to 1.100). Standard value should be 1.000.

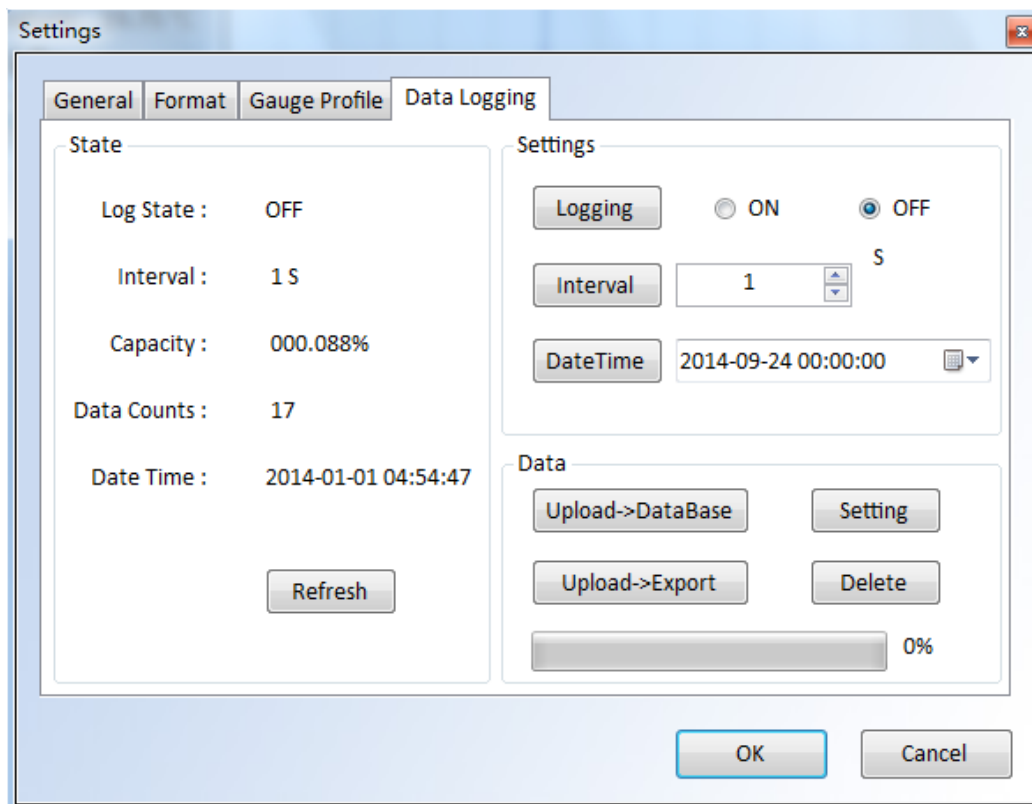
If display is 1.500, when we key-in the reading multiplying factor to 1.1. The display will change to read 1.650 (1.500 x 1.100)

Reading offset value. If we offset the reading of 0.123, then all the reading will be minus 0.123 even you off the power and on again. It is different from the zeroing.

- Resolution

Selection of Resolution. It is able to select the decimal point at which position. In the down list, you can select 5 or 6.

Data Logging



- State

Display the working state of memory board. Log state shows the function is on or off, interval shows how often to collect the next number, capacity shows the state of the capacity, data counts shows how many data the memory board has collected, date time shows the time. You can get new state of the memory board by clicking button "Refresh".

- Setting

Change the state of the memory board, remember to click the buttons ("Logging",

“Interval”, “Date Time”) after change the state.

- Data

Upload->DataBase: You can save the data on the memory board to the database by clicking this button.


Upload->Export: You can save the data on the memory board to a excel file by clicking this button.

Setting: You can change the unit of the data before upload them.


Delete: You can delete the data on the memory board.

4. Logging

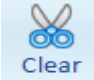

Software will display the real-time pressure value and the real-time chart. However it has not stored these data yet, users need to click the “start all” under the “log” menu or to click

the  button on each frame of UUTs to start storing.


When users want to stop storing data, they can click the “Stop All” under “Log” menu or

 buttons on each frame of UUTs.

5. Clear

Users can delete the stored data by clicking button  on toolbar or  on each frame of UUTs. When the deleting operation is finished, it will re-start another logging task automatically.

6. Unit

Users can define engineering unit by clicking button  on toolbar. There is a field for users to define engineering unit by themselves. The Reference Unit can be kPa or PSI.

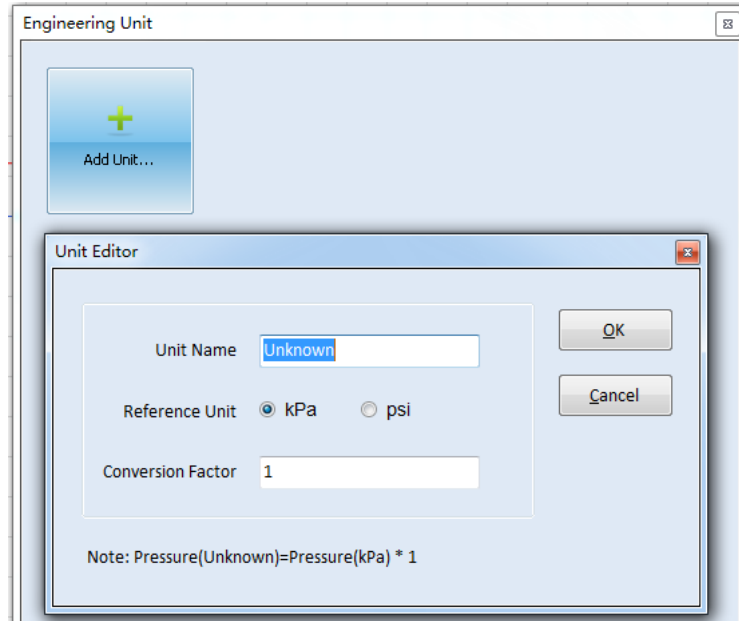



Figure 2-7

Users can change the pressure unit by clicking button  on each frame of UUTs. If you want to change the current pressure unit, please select the Custom Mode. And in the Custom Mode you can find the pressure unit which is defined by yourself. The Automatic Mode is checked in system by default.

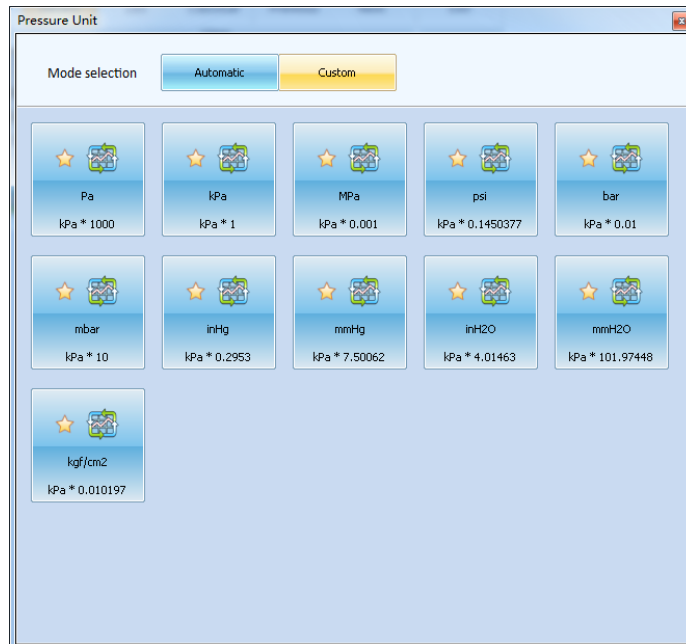


Figure 2-8

7. View

There are 3 different kinds of view for the interface, Details, List and Classical. The default is Details, as shown in below picture 2-1. Users can switch among them as per requirements by clicking the buttons in the “view” menu.

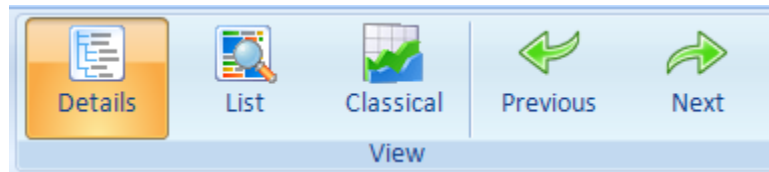
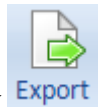



Figure 2-9

8. Data Manager



Click **Export** button on the toolbar or  buttons on each frame of UUTs to enter into the data managing window. This window includes the following functions.

- Seek Options
Users can search the stored data by setting time or inputting S/N of UUTs.
- Browse
Users can view the details information of selected data by clicking the “Open” on toolbar or double-click it.
- Export
The recorded data can be exported out as 3 formats, Excel workbook, XML Sheet and CSV Text File.
- Delete records
- Backup, recover or compress database.

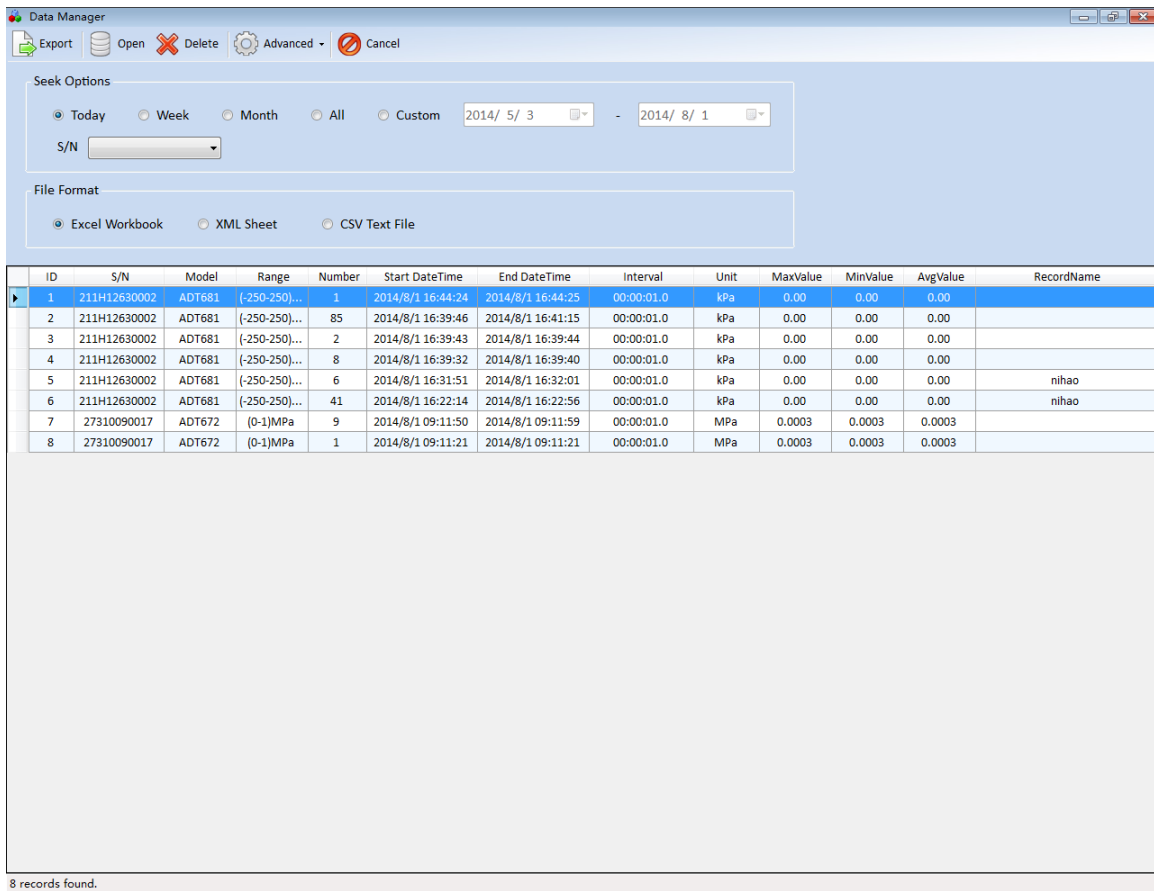


Figure 2-10

9. Check Update

You can update your software by clicking “CheckUpdate” item under the “Help” menu.

Additel/Log II

Main Help

About LogII CheckUpdate Diagnostics System Log Language

Model: ADT681
 SN: 1
 Range: (-250 - 250) kPa
 Status: Online COM2
 Temperature: 20.06 °C
0.00 kPa

Max: 0.00
 Min: 0.00
 Avg: 0.00

kPa

3.00

1.31 1.39 1.47 1.55 1.63 1.71 1.79

Pressure(1.67 min)

Pressure

Time(min)

1 device found.

Version:2.2.8

Additel

Additel Updater

Please select a way to update!

Online update Offline update

OK Exit